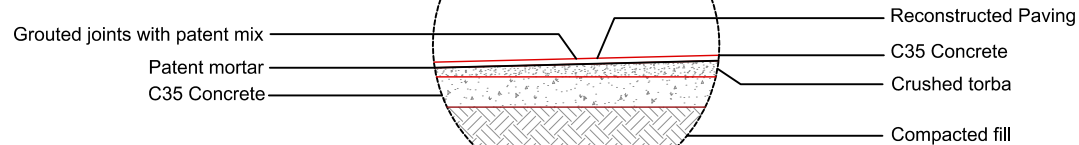


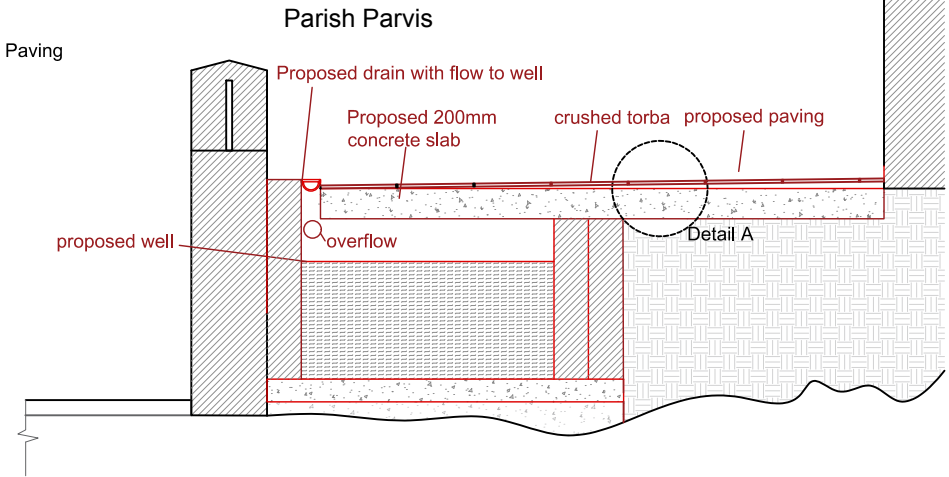
11a



Detail A

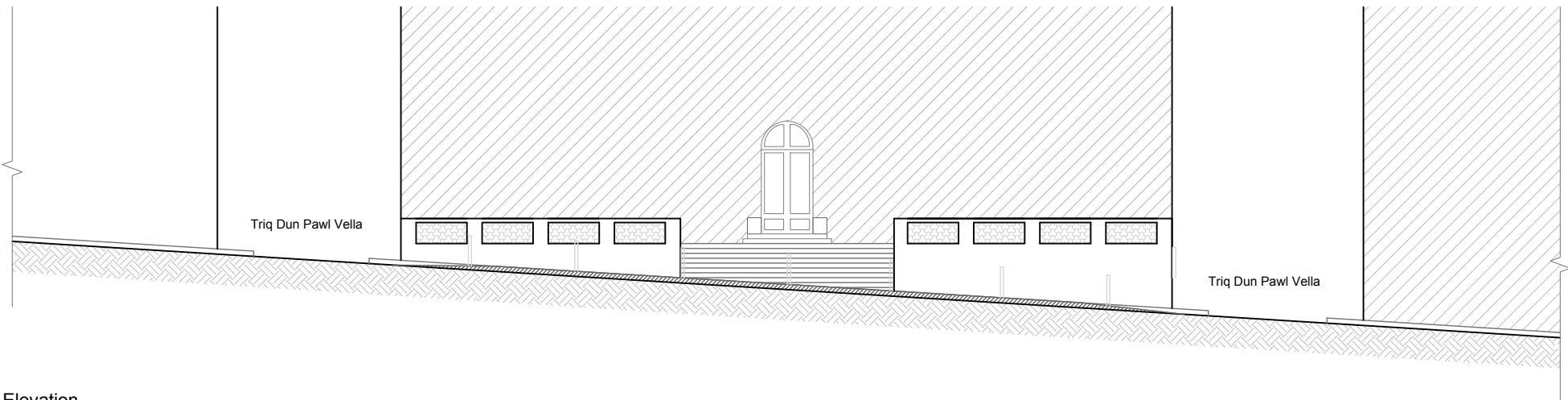
Work Method:

1. Careful removal of existing paving and numbering of each slab to facilitate re-laying in the correct order.
2. Store for reuse
3. Removal and disposal of 0.5m deep fill
4. Compaction of sub-grade
5. Supply and laying of C35 concrete with waterproofing additive
6. Re-laying of salvaged paving. Each slab to be relocated in their original orientation and position.
7. Damaged old paving blocks to be replaced by new hard stone paving blocks to match



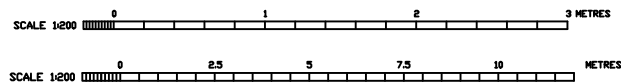
Section A-A

Scale: 1:50



Front Elevation

Scale: 1:200



Project:

Sacro Cuor,
Triq San Trofimu,
Sliema

Drawing Name:

Repairs to Parvis
Elevation, Section A-A and
Detail A

Dwg No: 002A

Rev : 2020.10.01

Drawn: DB

Date: 15.07.2020

Approved: JB

Scale: 1:200 (A4)

File No: J 485



Joe Bugeja
Associates
Maple Leaf
Handaq Road
Handaq Industrial
Estate, Qormi
QRM 4000